

Mechanisms of Antipsychotic-Induced Weight Gain

Roger S. McIntyre, M.D.; Deborah A. Mancini, M.A.;
and Vincenzo S. Basile, B.Sc., B.Ed.

The estimated percentage of persons with schizophrenia who are overweight is higher than the percentage of persons in the general population who are overweight. The increased mortality rate for persons with schizophrenia is largely due to obesity-related diseases. The atypical antipsychotics offer an improved therapeutic index when compared with the conventional agents, but may impart serious adverse events such as weight gain. This brief review is intended to provide the practicing clinician with an update of disparate research paradigms under investigation in an attempt to delineate the biological mechanisms that presage weight gain. Research success in this area may invite novel prevention strategies and hint at potential mechanisms of antipsychotic drug action.

(J Clin Psychiatry 2001;62[suppl 23]:23-29)

Most American adults are overweight, with a body mass index (BMI) of more than 25 kg/m².¹ During the past 2 decades, there have been epidemic increases in the prevalence of obesity (BMI ≥ 30 kg/m²), which is currently estimated at approximately 18%.²

Computed estimates of BMI among persons with schizophrenia and bipolar disorder exceed these general population estimates.^{3,4} Of particular concern is the fact that the excess adipose tissue described in some psychiatric populations is often centrally distributed (i.e., this abdominal adipose tissue is reflected in the waist-to-hip ratio).⁴ Central adipose tissue exhibits higher metabolic activity than peripheral tissue. These regional differences in metabolic activity promote elevated free fatty acid concentrations in the portal blood, which presage excess cardiac morbidity. The estimated waist-to-hip ratio in some psychiatric populations may be higher than in the general population. Importantly, these elevated estimates may be associated with exposure to antipsychotic drugs.⁴⁻⁶

The standardized mortality ratio for persons with schizophrenia is significantly higher than in the general population.⁷ The increased standardized mortality ratio reflects higher rates of both unnatural and natural death. Most persons with schizophrenia die of natural causes. Some of these natural causes are well-known obesity-related diseases (e.g., cardiovascular, respiratory, gastrointestinal, and genitourinary disorders).⁷ The high prevalence of obesity, smoking, and alcohol abuse in persons with schizophrenia contributes to this increased risk.⁷

Weight gain induced by conventional antipsychotics was described soon after the introduction of these drugs.^{8,9} Doss¹⁰ retrospectively described differential weight gain liability in 78 randomly assigned patients after 36 weeks of treatment with conventional antipsychotics. The weight gain induced by conventional antipsychotics is comparable for oral and depot formulations.^{11,12}

Several lines of evidence converge and suggest that some novel antipsychotics impart more substantial weight gain after short-term and long-term administration when compared with the older conventional medications.^{3,13-15} For example, a weight gain liability is clearly established with treatment with clozapine.¹⁵⁻¹⁸ Hummer and others¹⁹ prospectively followed 81 ambulatory patients with refractory psychotic disorders who were treated with clozapine. After 1 year, 36% of patients had gained more than 10% of their initial body weight. The average weight gain for all clozapine-treated patients was 3.5 kg (7.8 lb).

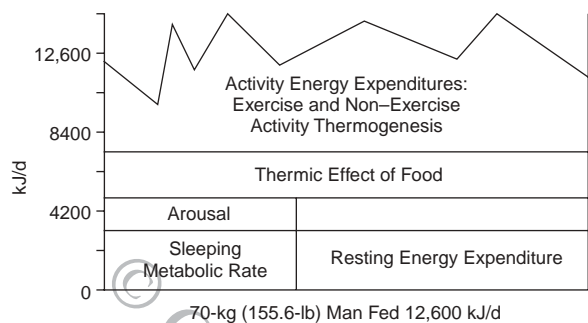
Allison and others³ meta-analyzed 81 treatment trials (18 including comparison with placebo) that were at least 10 weeks in duration and compared mean weight gain among patients using conventional antipsychotics and

From the Department of Psychiatry, University of Toronto (Dr. McIntyre), and the Mood and Anxiety Disorders Program (Dr. McIntyre and Ms. Mancini) and the Neurogenetics Section (Mr. Basile), Centre for Addiction and Mental Health, Toronto, Ontario, Canada.

Presented at the symposium "Effects of Drugs on Body Weight and Glucose Regulation," which was held December 16, 2000, at the New York University School of Medicine, New York, and supported by an unrestricted educational grant from AstraZeneca Pharmaceuticals, L.P.

Reprint requests to: Roger S. McIntyre, M.D., Mood Disorders Program, University of Toronto, Centre for Addiction and Mental Health, Clarke Institute of Psychiatry, 250 College St., Toronto, Ontario M5T 1R8 Canada (e-mail: roger_mccintyre@camh.net).

Figure 1. Daily Energy Expenditure^a



^aReprinted, with permission, from Ravussin and Bogardus.³⁶

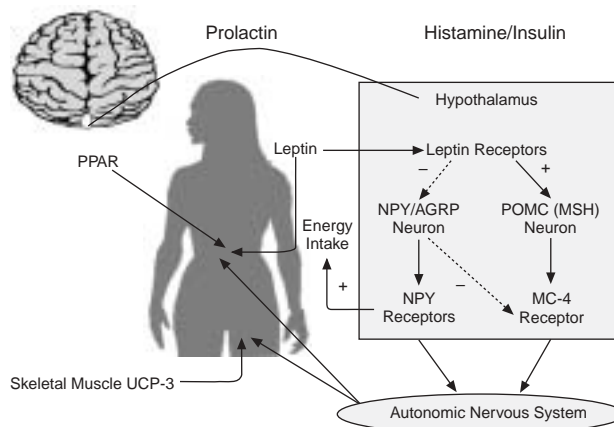
atypical antipsychotics approved for use or under investigation. Mean weight gain with several atypical antipsychotics was greater than that with conventional antipsychotics. Interestingly, the atypical antipsychotic molindone was associated with a 0.39-kg (0.87-lb) weight reduction. The weight-loss and anorexiatic properties of molindone have been described previously.²⁰⁻²²

Wirshing and others²³ retrospectively assessed weight gain in 92 male patients with schizophrenia enrolled in 8 antipsychotic efficacy studies conducted during a period of 6 years. Treatment with olanzapine and clozapine imparted the most weight gain, risperidone imparted an intermediate amount of weight gain, and sertindole induced less weight gain than haloperidol. The investigators determined that the weight gain plateaued at 20 weeks with olanzapine and clozapine versus 10 weeks with risperidone and sertindole. An inverse relationship between baseline BMI and weight gain was not seen. These data on weight gain converge with results from short-term, parallel-group design studies in patients with schizophrenia and bipolar disorder.²⁴⁻²⁷ It is hypothesized that the disparate receptor pharmacology of the available antipsychotics may bestow differential weight gain liability.^{3,27}

Conventional antipsychotics and atypical antipsychotics exhibit differential weight gain liability. Clozapine appears to have the greatest weight gain potential, and ziprasidone appears to have the least.^{3,27} The amount of weight gain associated with these agents may increase the risk for weight-related medical comorbidity.²⁸

A diverse constellation of sociodemographic and clinical characteristics (e.g., age, duration of treatment, appetite stimulation, baseline BMI) has been associated with antipsychotic-induced weight gain.^{13,29,30} Elucidating these variables may assist the clinician in identifying a priori those patients at higher risk for weight gain and may shed light on possible pathogenic mechanisms. Emerging data suggest that novel antipsychotic-induced weight gain may predispose and portend risk for glucose-insulin dysregulation and lipid milieu abnormalities.^{23,31-34} Of further concern, persons receiving antipsychotic medications are only

Figure 2. Human Body Weight Regulation^a



^aReprinted, with permission, from Yanovski and Yanovski.¹

Abbreviations: AGRP = agouti-related peptide, MC-4 = melanocortin-4, MSH = α melanocyte-stimulating hormone, NPY = neuropeptide Y, POMC = pro-opiomelanocortin, PPAR = peroxisome proliferator-activated receptor, UCP-3 = uncoupling protein 3.

about 25% as likely to receive lipid-lowering treatments compared with the general population.³⁵

MECHANISMS OF ANTIPSYCHOTIC-INDUCED WEIGHT GAIN

Body weight is dependent on the balance between energy intake and energy expenditure. Energy expenditure is further partitioned into resting energy expenditure and activity-related expenditure (Figure 1). When a person is in positive energy balance, weight is gained. Heritability studies suggest that up to 70% of body weight is genetically mediated, although environmental factors also play critical roles.^{1,2} Neurobiological mechanisms that regulate energy intake may mediate their effects centrally (e.g., through increased appetite) or peripherally (e.g., through taste aversion). Most of the existing data describing mechanisms of antipsychotic-induced weight gain have emphasized changes in putative neurocircuits hypothesized to participate in increased energy intake (e.g., increased appetite).

Monoamines

The lateral hypothalamus is a critical anatomical site for weight regulation (Figure 2). Monoamine activity at the level of the hypothalamus is the most studied paradigm in antipsychotic-induced weight gain. For example, infusion of catecholamines into the lateral hypothalamus will reduce rat feeding behavior, an effect that is reversed with the infusion of various conventional antipsychotics.³⁷ It is hypothesized that putative anorectic agents (e.g., sibutramine) reduce weight by increasing norepinephrine and serotonin availability at the level of the hypothalamus.³⁸

Dopamine robustly decreases feeding behavior in animal models. Dopamine agonists may effectively reduce weight gain, and, in open-label studies, amantadine has been shown to counteract olanzapine-induced weight gain.³⁹

Serotonin is a well-known satiety factor. Absolute or relative increases in serotonin at diverse serotonin receptors have been shown to decrease feeding behavior, while antagonism of serotonin stimulates increased energy intake.^{40,41} It remains to be elucidated which serotonin receptors are critical for feeding behavior.

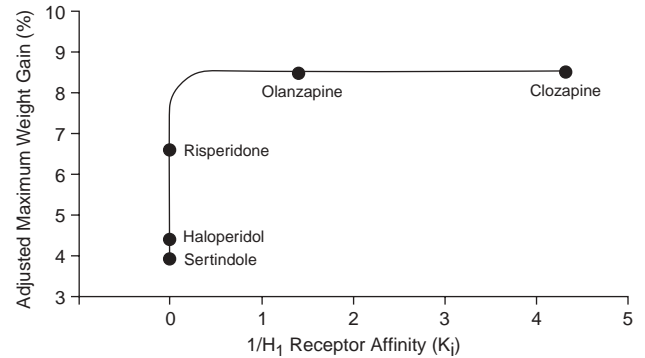
5-HT_{2C} is a candidate receptor for psychotropic-induced weight gain. Tecott et al.⁴² bred a strain of mutant mice with functional 5-HT_{2C} receptors knocked out. These mice became obese later in life, developed laboratory evidence of the obesity syndrome (i.e., increased insulin and leptin), and had a propensity for seizures. Vickers et al.⁴³ compared the effects of a 14-day subcutaneous infusion of 5-HT_{2C} receptor agonists and the 5-HT releasing agent and reuptake inhibitor dexfenfluramine on food and water intake and weight gain in rats. *m*-Chlorophenylpiperazine (a metabolite of nefazodone) and fenfluramine are non-specific agonists for the 5-HT_{2C} receptor. Interestingly, these experimental rats did not exhibit predictable decreased feeding behavior after administration of dexfenfluramine or *m*-chlorophenylpiperazine. Dexfenfluramine, the more active enantiomer of the serotonin release/reuptake blocker fenfluramine, has previously been demonstrated to reduce weight gain with depot conventional antipsychotics.⁴⁴

5-HT_{2C} receptors are antagonized by various agents that produce weight gain (e.g., tricyclic antidepressants, novel antipsychotics) and are minimally affected by agents such as haloperidol that produce minimal weight gain. However, a recent analysis failed to correlate weight gain from clozapine, olanzapine, risperidone, haloperidol, and sertindole with 5-HT_{2C} affinity.²³ Another line of research evidence militating against this candidate receptor is the observation that ziprasidone (which imparts minimal weight gain) exhibits high in vivo affinity for the 5-HT_{2C} receptor.

Histamine

Histamine signaling in the hypothalamus may offer an antiobesity effect. Histamine-receptor populations (H₁, H₂, H₃) are involved in mediating drinking behavior in rats.⁴⁵ Agents with high affinity for histamine receptors (i.e., low-potency conventional antipsychotics, mirtazapine, and some over-the-counter drugs) have well-established effects of weight gain.⁴⁶ Wirshing et al.²³ found a robust correlation between novel antipsychotic affinity for the histamine receptor and antipsychotic-induced weight gain (Figure 3). It is postulated that histamine antagonism stimulates energy intake centrally by increasing appetite, with a resultant positive energy balance. Cimetidine, an H₂

Figure 3. Weight Gain as a Function of H₁ Affinity^a



^aReprinted, with permission, from Wirshing et al.²³

antagonist, appears to reduce appetite and weight in overweight subjects⁴⁷ and to improve glucose control in patients with type 2 diabetes mellitus.

Hormones

Weight dysregulation may disrupt both the reproductive and nonreproductive hormonal milieu. Polycystic ovarian disease, reported in female patients with epilepsy and bipolar disorder who are treated with valproic acid, is a metabolic and reproductive disorder in which excess weight is a common feature.^{48,49}

Obesity is associated with elevated levels of androgen in females and decreased levels in males. These changes in hormonal levels may reduce the sensitivity of satiety neurons in the lateral hypothalamus. Elevated prolactin levels, associated with treatment with conventional antipsychotics and risperidone, may promote weight gain directly by decreasing insulin sensitivity or indirectly by further disrupting the androgen and estrogen ratios. This is currently under investigation.^{50,51}

Other Neurotransmitters

Agents that positively modulate γ -aminobutyric acid (GABA) neurotransmission (e.g., divalproex sodium) have been reported to promote weight gain.⁵²⁻⁵⁴ Agents that decrease glutamatergic function (e.g., lamotrigine, topiramate) impart minimal weight gain or induce weight loss.^{13,48} For example, agonists at the glutamate *N*-methyl-D-aspartate (NMDA) receptor (e.g., glycine) have been noted to stimulate feeding behavior in rats when infused in the hypothalamus.⁵⁵ Some novel antipsychotics are hypothesized to enhance GABA function, which may alter the GABA-glutamate balance and thus foster weight gain.⁵¹

Neuropeptides and Cytokines

A disparate assortment of neuropeptides are noted to affect energy balance both centrally and peripherally.

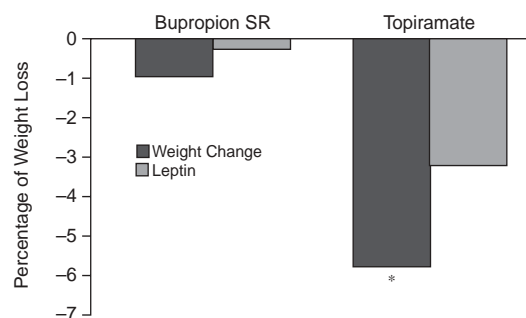
There has been a dearth of data describing the effects of novel antipsychotics on many of these proteins, which include insulin, neuropeptide Y, tumor necrosis factor α (TNF- α), pro-opiomelanocortin (and its cleavage products α melanocyte-stimulating hormone and adrenocorticotrophic hormone), and agouti peptides.

Clozapine increases the levels of helical cytokines such as TNF- α , interleukin 2, and leptin.⁵⁶ The weight gain induced by this atypical antipsychotic may be related to these increases.

TNF- α is hypothesized to play a critical role in various metabolic, immune, and appetite behaviors⁵⁷ and affects glucose, protein, and lipid metabolism.^{58–60} Circulating levels of TNF- α and its soluble receptors are increased in obese subjects compared with lean controls, and decrements in the levels are seen with weight loss.^{61,62} Patients gaining weight with treatment with amitriptyline or nortriptyline exhibit elevations in the soluble TNF- α receptor patterns that preceded the increase in BMI.^{18,59–65} Changes in receptor levels are hypothesized to be a sensitive marker for TNF- α activity, thus implicating TNF- α systems as critical to tricyclic antidepressant-induced weight gain. TNF- α has been shown to increase the release of leptin from adipocytes^{60,64} and as such is a rational peptide to further investigate in subsequent antipsychotic-induced weight gain mechanistic studies. These studies are currently underway.⁶⁶

Leptin, a product of the obesity gene, is one of several genes that participate in weight regulation. Inactivity mutations at the gene coding for the protein product leptin or its receptor have been shown to result in the obesity phenotype.¹ Exogenous administration of recombinant human leptin is under investigation as an adjunctive treatment for obesity.¹ The precise role of leptin requires further delineation; it is believed to act at the level of the hypothalamus and regulate energy expenditure, the neuroendocrine axis, and appetite. Leptin levels exhibit circadian variation and sexual dimorphism (levels are higher in females than in males at similar BMI) and correlate with adipose tissue and BMI levels.^{13,31} Bromel et al.⁶³ described increased leptin levels in clozapine-treated persons (N = 12) with psychotic disorders. Significant increases in leptin levels were observed as early as week 2. This rapid increase and reversal after discontinuation of clozapine implicated direct or indirect effects of clozapine on leptin levels. Kraus et al.⁶⁷ noted increases in leptin levels commensurate with increases in body weight and BMI in a sample of inpatients with schizophrenia who were being treated with clozapine and olanzapine. The increased circulating plasma leptin levels would be predicted given the increase in adipose tissue with both olanzapine and clozapine; however, reduced feedback sensitivity of the central nervous system (CNS) to leptin cannot be ruled out. Others have speculated that weight gain with olanzapine may result from desensitization of the CNS to the peripheral leptin signal.³¹

Figure 4. Percentage Change in Weight After 8 Weeks of Treatment With Topiramate or Bupropion SR^a



^aReprinted, with permission, from McIntyre et al.⁷¹ Absolute weight loss was 1.2 kg (2.7 lb) for bupropion SR and 5.8 kg (12.9 lb) for topiramate. Abbreviation: SR = sustained release.

*p = .019.

Uncoupling Proteins

Uncoupling proteins (UCPs) regulate energy expenditure through peripheral mechanisms. There is tissue selectivity for UCP-1 through -3, with UCP-1 found in brown adipose tissue; UCP-2 ubiquitous in its distribution, with a preponderance in white adipose tissue; and UCP-3 found in skeletal muscle. UCPs reroute proteins, the products of oxidative phosphorylation, either to storage or to be dissipated as heat.¹ Although the effect of novel antipsychotics on UCPs has not been delineated, other neurotherapeutic molecules have been shown to affect UCP transcription.^{68–70}

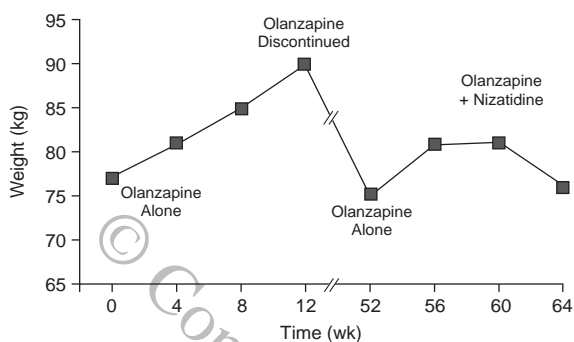
Peroxisome Proliferator-Activated Receptors

Energy storage in adipose tissue is in part mediated by receptors on preadipocytes that are called peroxisome proliferator-activated receptors (PPARs). These receptors promote the conversion of a non-lipid-storing preadipocyte to an adipocyte. Antipsychotic medication is associated with increased fat mass⁴; however, it is not known if novel antipsychotics affect these PPAR receptors.

COUNTERACTING ANTIPSYCHOTIC-INDUCED WEIGHT GAIN

A variety of different techniques have been used to attempt to counteract antipsychotic-induced weight gain.¹³ Dietary counseling and behavioral modification are integral components of any successful weight loss program.¹ Topiramate is an anticonvulsant agent synthesized from D-fructose. It also contains a sulfamate moiety essential for pharmacologic activity. It is approved for the treatment of seizure disorders and is under investigation in several therapeutic areas, including migraine, benign essential tremors, neuropathic pain, and bipolar disorder (Figure 4).^{13,53,71}

Figure 5. Nizatidine, an H₂ Antagonist, May Control Olanzapine-Associated Weight Gain in Patients With Schizophrenia^a



^aReprinted, with permission, from Sacchetti et al.⁷⁴

Administration of topiramate has been shown to result in substantial weight loss in different patient populations.⁷² This effect is likely mediated by several different mechanisms. For example, in rats, topiramate significantly reduces food intake and increases metabolic rate.^{53,73} Centrally, topiramate reduces neuropeptide Y1 and Y5 receptors (receptors for the orexigenic neuropeptide Y). Peripherally, topiramate reduces leptin messenger RNA (mRNA) transcription in adipose tissue and significantly increases mRNA for UCP-2 in white adipose tissue. These central and peripheral effects are also noted with dexfenfluramine, and these molecular effects are hypothesized to result in increased thermogenesis and increased energy expenditure. It is not reliably known if novel antipsychotics negatively modulate the transcription of some of neuropeptide Y in predisposed individuals.

Histamine antagonists have also been utilized to minimize antipsychotic-induced weight gain. For example, nizatidine, an H₂ antagonist, has been demonstrated to attenuate overall olanzapine-induced weight gain (Figure 5).⁷⁴ We currently do not have an effective mechanistically based treatment for antipsychotic-induced weight gain. Some have observed improved therapeutic outcomes in persons who exhibit antipsychotic-induced weight gain.¹³ Delineating the underlying mechanisms of antipsychotic-induced weight gain may promote novel approaches and further illuminate understandings of antipsychotic-induced weight gain and therapeutic activity.

CONCLUSION

This review of potential mechanisms of antipsychotic-induced weight gain is against a background of several other variables that may be associated with weight gain. These include a host of illness variables (e.g., inactivity, negative symptoms, poor access to exercise venues, and socioeconomic status) and increased exposure to obesity-promoting environments.¹

The weight gain noted with many of the new atypical antipsychotics exceeds that imparted by the older conventional antipsychotics. Persons with schizophrenia appear to be more overweight than the general population. This excess weight may be overrepresented in the abdominal compartment and is associated with exposure to antipsychotic drugs. Novel antipsychotic-induced weight gain adds further risk for obesity-related morbidity in this already at-risk population.

The mechanisms of novel antipsychotic-induced weight gain clearly require further delineation. Weight gain in the general population is a multifactorial phenotype. Most data suggest that, by modulating central mechanisms, novel antipsychotics increase energy balance by increasing appetite. There is a paucity of data describing the peripheral (i.e., energy expenditure) mechanisms. Delineating the mechanisms of weight gain may further refine mechanistic models of antipsychotic action and guide future treatment approaches.

Drug names: amantadine (Symmetrel and others), amitriptyline (Elavil and others), bupropion (Wellbutrin), clozapine (Clozaril and others), divalproex sodium (Depakote), haloperidol (Haldol and others), lamotrigine (Lamictal), mirtazapine (Remeron), molindone (Moban), nefazodone (Serzone), nizatidine (Axid), nortriptyline (Pamelor and others), olanzapine (Zyprexa), risperidone (Risperdal), sibutramine (Meridia), topiramate (Topamax), valproic acid (Depakene and others), ziprasidone (Geodon).

Disclosure of off-label usage: The authors have determined that, to the best of their knowledge, no investigational information about pharmaceutical agents has been presented in this article that is outside U.S. Food and Drug Administration–approved labeling.

REFERENCES

1. Yanovski JA, Yanovski SZ. Recent advances in basic obesity research. *JAMA* 1999;282:1504–1506
2. Mokdad AH, Serdula MK, Dietz WH, et al. The spread of the obesity epidemic in the United States, 1991–1998. *JAMA* 1999;282:1519–1522
3. Allison DB, Mentore JL, Heo M, et al. Antipsychotic-induced weight gain: a comprehensive research synthesis. *Am J Psychiatry* 1999;156:1686–1696
4. Elmslie JL, Silverstone JT, Mann JJ, et al. Prevalence of overweight and obesity in bipolar patients. *J Clin Psychiatry* 2000;61:179–184
5. Sharpe JK, Hills AP. Anthropometry and adiposity in a group of people with chronic mental illness. *Aust N Z J Psychiatry* 1998;32:77–81
6. Stedman T, Welham J. The distribution of adipose tissue in female inpatients receiving psychotropic drugs. *Br J Psychiatry* 1993;162:249–250
7. Dixon L, Postrado L, Delahanty J, et al. The association of medical comorbidity in schizophrenia with poor physical and mental health. *J Nerv Ment Dis* 1999;187:496–502
8. Planansky K, Heilizer F. Weight changes in relation to the characteristic of patients on chlorpromazine. *J Clin Exp Psychopathol Q Rev Psychiatry Neurol* 1959;20:53–57
9. Klett C, Caffey E. Weight changes during treatment with phenothiazine derivatives. *J Neuropsychiatry* 1960;2:102–108
10. Doss FW. The effect of antipsychotic drugs on body weight: a retrospective review. *J Clin Psychiatry* 1979;40:528–530
11. Ganguli R. Weight gain associated with antipsychotic drugs. *J Clin Psychiatry* 1999;60(suppl 21):20–24
12. Johnson DA, Breen M. Weight changes with depot neuroleptic maintenance therapy. *Acta Psychiatr Scand* 1979;59:525–528
13. McIntyre RS, McCann SM, Kennedy SH. Antipsychotic metabolic effects: weight gain, diabetes mellitus, and lipid abnormalities. *Can J Psychiatry*

- 2001;46:273–281
14. Kelly DL, Conley RR, Love RC, et al. Weight gain in adolescents treated with risperidone and conventional antipsychotics over six months. *J Child Adolesc Psychopharmacol* 1998;8:151–159
 15. Lamberti JS, Bellnier T, Schwarzkopf SB. Weight gain among schizophrenic patients treated with clozapine. *Am J Psychiatry* 1992;149:689–690
 16. Leadbetter R, Shutty M, Pavalonis D, et al. Clozapine-induced weight gain: prevalence and clinical relevance. *Am J Psychiatry* 1992;149:68–72
 17. Umbricht DS, Pollack S, Kane JM. Clozapine and weight gain. *J Clin Psychiatry* 1994;55(suppl B):157–160
 18. Bustillo JR, Buchanan RW, Irish D, et al. Differential effect of clozapine on weight: a controlled study. *Am J Psychiatry* 1996;153:817–819
 19. Hummer M, Kemmler G, Kurz M, et al. Weight gain induced by clozapine. *Eur Neuropsychopharmacol* 1995;5:437–440
 20. Clark ML, Huber WK, Sakata K, et al. Molindone in chronic schizophrenia. *Clin Pharmacol Ther* 1970;11:680–688
 21. Gallant DM, Bishop MP, Steele CA, et al. Molindone: a crossover evaluation of capsule and tablet formulations in severely ill schizophrenic patients. *Curr Ther Res Clin Exp* 1973;15:915–918
 22. Gardos G, Cole JO. Weight reduction in schizophrenics by molindone. *Am J Psychiatry* 1977;134:302–304
 23. Wirshing DA, Wirshing WC, Kysar L, et al. Novel antipsychotics: comparison of weight gain liabilities. *J Clin Psychiatry* 1999;60:358–363
 24. Tran PV, Hamilton SH, Kuntz AJ, et al. Double-blind comparison of olanzapine versus risperidone in the treatment of schizophrenia and other psychotic disorders. *J Clin Psychopharmacol* 1997;17:407–418
 25. Tohen M, Zarate CA Jr. Antipsychotic agents and bipolar disorder. *J Clin Psychiatry* 1998;59(suppl 1):38–48
 26. Guille C, Sachs GS, Ghaemi SN. A naturalistic comparison of clozapine, risperidone, and olanzapine in the treatment of bipolar disorder. *J Clin Psychiatry* 2000;61:638–642
 27. Frye MA, Ketter TA, Altshuler LL, et al. Clozapine in bipolar disorder: treatment implications for other atypical antipsychotics. *J Affect Disord* 1998;48:91–104
 28. Manson JE, Willett WC, Stampfer MJ, et al. Body weight and mortality among women. *N Engl J Med* 1995;333:677–685
 29. Jones B, Basson BR, Walker DJ, et al. Weight change and atypical antipsychotic treatment in patients with schizophrenia. *J Clin Psychiatry* 2001;62(suppl 2):41–44
 30. Kinon BJ, Basson BR, Gilmore JA, et al. Long-term olanzapine treatment: weight change and weight-related health factors in schizophrenia. *J Clin Psychiatry* 2001;62:92–100
 31. Melkersson KI, Hulting AL, Brismar KE. Elevated levels of insulin, leptin, and blood lipids in olanzapine-treated patients with schizophrenia or related psychoses. *J Clin Psychiatry* 2000;61:742–749
 32. Liezeit KA, Markowitz JS, Caley CF. New onset diabetes and atypical antipsychotics. *Eur Neuropsychopharmacol* 2001;11:25–32
 33. Sobel M, Jagers ED, Franz MA. New-onset diabetes mellitus associated with the initiation of quetiapine treatment [letter]. *J Clin Psychiatry* 1999;60:556–557
 34. Goldstein L, Henderson D. Atypical antipsychotic agents and diabetes mellitus. *Primary Psychiatry* 2000;7:65–68
 35. Redelmeier DA, Tan SH, Booth GL. The treatment of unrelated disorders in patients with chronic medical diseases. *N Engl J Med* 1998;338:1516–1520
 36. Ravussin E, Bogardus C. Relationship of genetics, age, and physical fitness to daily energy expenditure and fuel utilization. *Am J Clin Nutr* 1989;49:968–975
 37. Leibowitz SF. Neurochemical systems of the hypothalamus: control of feeding and drinking behaviour and water-electrolyte excretion. In: Morgan P, Panksepp J, eds. *Handbook of the Hypothalamus*, vol 3. New York, NY: Marcel Dekker, Inc; 1980:299–438
 38. Jackson HC, Needham AM, Hutchins LJ, et al. Comparison of the effects of sibutramine and other monoamine reuptake inhibitors on food intake in the rat. *Br J Pharmacol* 1997;121:1758–1762
 39. Floris M, Lejeune J, Deberdt W. Effect of amantadine on weight gain during olanzapine treatment. *Eur Neuropsychopharmacol* 2001;11:181–182
 40. De Vry J, Schreiber R. Effects of selected serotonin 5-HT(1) and 5-HT(2) receptor agonists on feeding behavior: possible mechanisms of action. *Neurosci Biobehav Rev* 2000;24:341–353
 41. Meguid MM, Fetissov SO, Varma M, et al. Hypothalamic dopamine and serotonin in the regulation of food intake. *Nutrition* 2000;16:843–857
 42. Tecott LH, Sun LM, Akana SF, et al. Eating disorder and epilepsy in mice lacking 5-HT_{2C} serotonin receptors. *Nature* 1995;374:542–546
 43. Vickers SP, Benwell KR, Porter RH, et al. Comparative effects of continuous infusion of *m*-CPP, Ro 60-0175 and *D*-fenfluramine on food intake, water intake, body weight and locomotor activity in rats. *Br J Pharmacol* 2000;130:1305–1314
 44. Goodall E, Oxtoby C, Richards R, et al. A clinical trial of the efficacy and acceptability of *D*-fenfluramine in the treatment of neuroleptic-induced obesity. *Br J Psychiatry* 1988;153:208–213
 45. Kraly FS, Katz JB, Burchard AE, et al. H₂ histaminergic control of inhibition of eating induced by intragastric NaCl in rats. *Physiol Behav* 1998;65:105–113
 46. Sussman N, Ginsberg D. Atypical neuroleptics and glucose regulation. *Primary Psychiatry* 1999;6:38–40
 47. Birketvedt GS, Florholmen J, Sundsfjord J, et al. Behavioral and neuroendocrine characteristics of the night-eating syndrome. *JAMA* 1999;282:657–663
 48. McIntyre R, Mancini D, McCann S, et al. Divalproex and females with bipolar disorder: reproductive and metabolic risks. Presented at the 4th annual meeting of the International Conference on Bipolar Disorder; June 14–16, 2001; Pittsburgh, Pa
 49. Isojarvi JI, Laatikainen TJ, Pakarinen AJ, et al. Polycystic ovaries and hyperandrogenism in women taking valproate for epilepsy. *N Engl J Med* 1993;329:1383–1388
 50. Baptista T, Lacruz A, de Mendoza S, et al. Body weight gain after administration of antipsychotic drugs: correlation with leptin, insulin and reproductive hormones. *Pharmacopsychiatry* 2000;33:81–88
 51. Baptista T. Body weight gain induced by antipsychotic drugs: mechanisms and management. *Acta Psychiatr Scand* 1999;100:3–16
 52. Ketter TA, Post RM, Theodore WH. Positive and negative psychiatric effects of antiepileptic drugs in patients with seizure disorders. *Neurology* 1999;53:53–67
 53. Picard F, Deshaies Y, Lalonde J, et al. Topiramate reduces energy and fat gains in lean (Fa/?) and obese (fa/fa) Zucker rats. *Obes Res* 2000;8:656–663
 54. Gordon A, Price LH. Mood stabilization and weight loss with topiramate. *Am J Psychiatry* 1999;156:968–969
 55. Stanley BG, Butterfield BS, Grewal RS. NMDA receptor coagonist glycine site: evidence for a role in lateral hypothalamic stimulation of feeding. *Am J Physiol* 1997;273:790–796
 56. Haack M, Hinze-Selch D, Fenzel T, et al. Plasma levels of cytokines and soluble cytokine receptors in psychiatric patients upon hospital admission: effects of confounding factors and diagnosis. *J Psychiatr Res* 1999;33:407–418
 57. Bullo-Bonet M, Garcia-Lorda P, Lopez-Soriano FJ, et al. Tumour necrosis factor, a key role in obesity? *FEBS Lett* 1999;451:215–219
 58. Old LJ. Tumour necrosis factor (TNF). *Science* 1985;230:630–632
 59. Kawakami M, Cerami A. Studies of endotoxin-induced decrease in lipoprotein lipase activity. *J Exp Med* 1981;154:631–639
 60. Argiles JM, Lopez-Soriano J, Busquets S, et al. Journey from cachexia to obesity by TNF. *FASEB J* 1997;11:743–751
 61. Dandona P, Weinstock R, Thusu K, et al. Tumour necrosis factor- α in sera of obese patients: fall with weight loss. *J Clin Endocrinol Metab* 1998;83:2907–2910
 62. Hauner H, Bender M, Haastert B, et al. Plasma concentrations of soluble TNF- α receptors in obese subjects. *Int J Obes Relat Metab Disord* 1998;22:1239–1243
 63. Bromel T, Blum WF, Ziegler A, et al. Serum leptin levels increase rapidly after initiation of clozapine therapy. *Mol Psychiatry* 1998;3:76–80
 64. Auwerx J, Staels B. Leptin. *Lancet* 1998;351:737–742
 65. Hinze-Selch D, Schuld A, Kraus T, et al. Effects of antidepressants on weight and on the plasma levels of leptin, TNF- α and soluble TNF receptors: a longitudinal study in patients treated with amitriptyline or paroxetine. *Neuropsychopharmacology* 2000;23:13–19
 66. Schuld A, Kraus T, Haack M, et al. Plasma levels of cytokines and soluble cytokine receptors during treatment with olanzapine. *Schizophr Res* 2000;43:164–166
 67. Kraus T, Haack M, Schuld A, et al. Body weight and leptin plasma levels during treatment with antipsychotic drugs. *Am J Psychiatry* 1999;156:312–314
 68. Nagase I, Yoshida T, Saito M. Up-regulation of uncoupling proteins by β -adrenergic stimulation in L6 myotubes. *FEBS Lett* 2001;494:175–180
 69. Berraondo B, Marti A, Duncan JS, et al. Up-regulation of muscle UCP2

- gene expression by a new β_3 -adrenoceptor agonist, trectadrine, in obese (cafeteria) rodents, but down-regulation in lean animals. *Int J Obes Relat Metab Disord* 2000;24:156–163
70. Boss O, Bachman E, Vidal-Puig A, et al. Role of the $\beta(3)$ -adrenergic receptor and/or a putative $\beta(4)$ -adrenergic receptor on the expression of uncoupling proteins and peroxisome proliferator-activated receptor- γ coactivator-1. *Biochem Biophys Res Commun* 1999;261:870–876
 71. McIntyre R, Mancini D, McCann S, et al. Topiramate versus bupropion SR added to mood-stabilizer therapy for the depressive phase of bipolar disorder: a single-blind study. Presented at the 2nd annual meeting of the European Stanley Foundation; 2000; Amsterdam, Holland
 72. Chengappa KN, Rathore D, Levine J, et al. Topiramate as add-on treatment for patients with bipolar mania. *Bipolar Disord* 1999;1:42–53
 73. York DA, Singer L, Thomas S, et al. Effect of topiramate on body weight and body composition of osborne-mendel rats fed a high-fat diet: alterations in hormones, neuropeptide, and uncoupling-protein mRNAs. *Nutrition* 2000;16:967–975
 74. Sacchetti E, Guarneri L, Bravi D. H(2) antagonist nizatidine may control olanzapine-associated weight gain in schizophrenic patients. *Biol Psychiatry* 2000;48:167–168

© Copyright 2001 Physicians Postgraduate Press, Inc.
 One personal copy may be printed