



THE JOURNAL OF  
**CLINICAL PSYCHIATRY**

THE OFFICIAL JOURNAL OF THE AMERICAN SOCIETY OF CLINICAL PSYCHOPHARMACOLOGY

## **Supplementary Material**

**Article Title:** Computer-Assisted Cognitive-Behavioral Therapy for Depression: A Systematic Review and Meta-Analysis

**Author(s):** Jesse H. Wright, MD, PhD; Jesse J. Owen, PhD; Derek Richards, PhD; Tracy D. Eells, PhD; Thomas Richardson, PhD; Gregory K. Brown, PhD; Marna Barrett, PhD; Mary Ann Rasku, MD; Geneva Polser, MEd; and Michael E. Thase, MD

**DOI Number:** <https://doi.org/10.4088/JCP.18r12188>

### **List of Supplementary Material for the article**

1. [Figure 1](#) PRISMA Flowchart
2. [Figure 2](#) Effect Sizes for CCBT versus Control Condition: Follow-up Analysis
3. [Figure 3](#) Effect Sizes for CCBT versus Control Condition: Type of Clinician Support
4. [Figure 4](#) Post-treatment Effect Sizes for CCBT versus Control Condition: Primary Care Compared to Other Settings
5. [Figure 5](#) Post-treatment Effect Sizes for CCBT versus Control Condition: Influence of Baseline Severity of Depression
6. [Table 1](#) CLEAR Ratings for Individual Studies
7. [Appendix 1](#) Funnel Plot of Standard Error by Hedges's  $g$

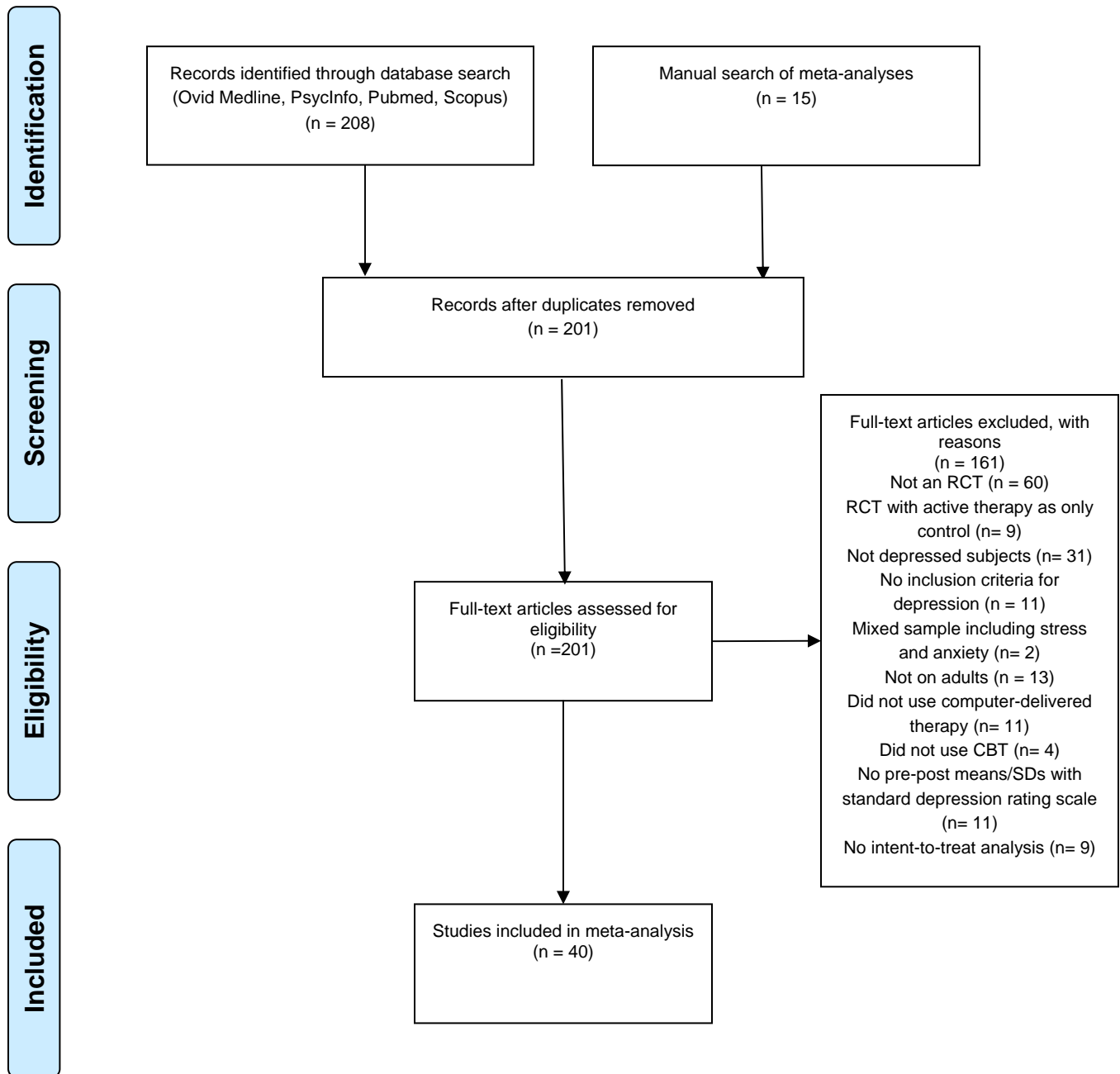
### **Disclaimer**

This Supplementary Material has been provided by the author(s) as an enhancement to the published article. It has been approved by peer review; however, it has undergone neither editing nor formatting by in-house editorial staff. The material is presented in the manner supplied by the author.

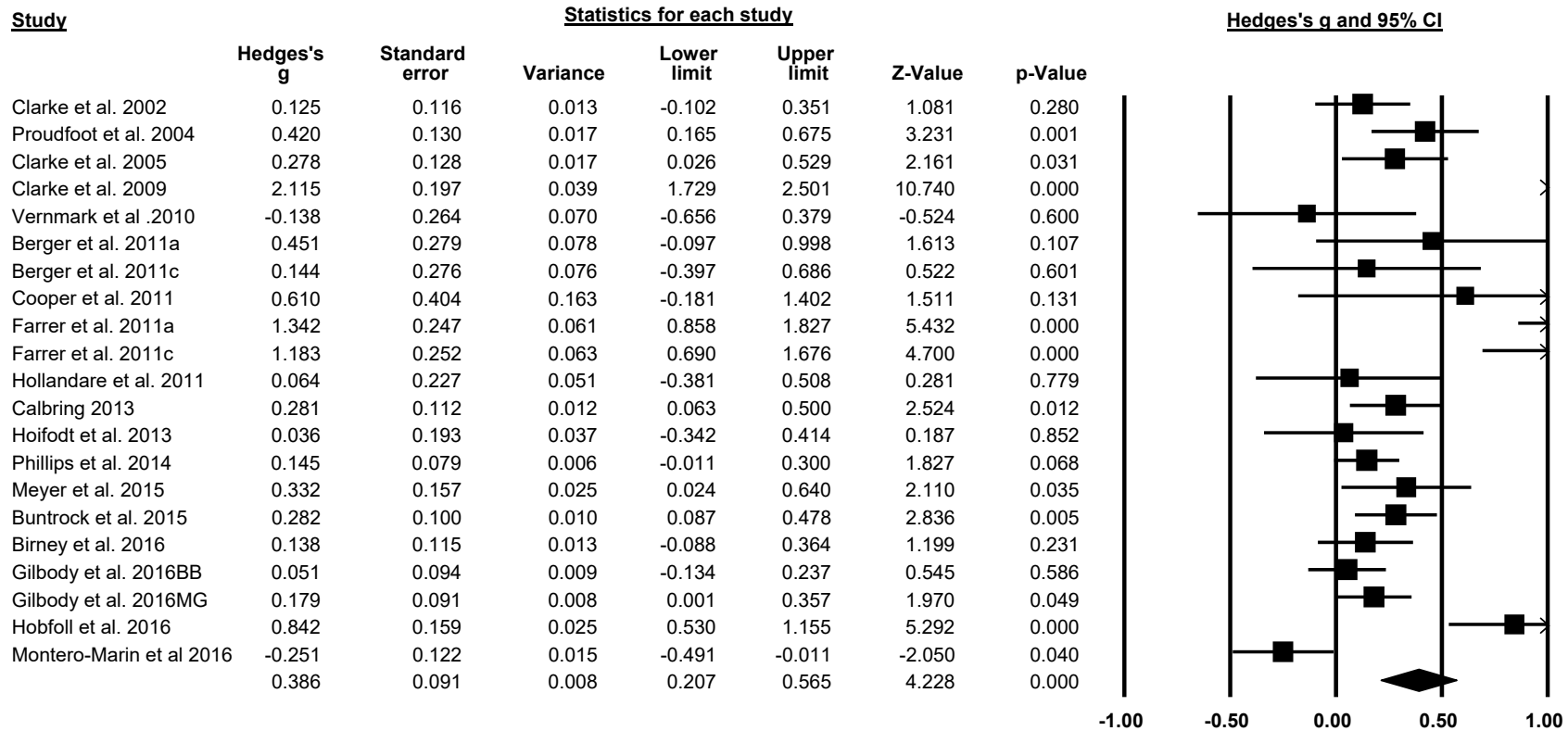
© Copyright 2019 Physicians Postgraduate Press, Inc.

It is illegal to post this copyrighted PDF on any website. ♦ © 2019 Copyright Physicians Postgraduate Press, Inc.

# Supplementary Figure 1. PRISMA Flowchart



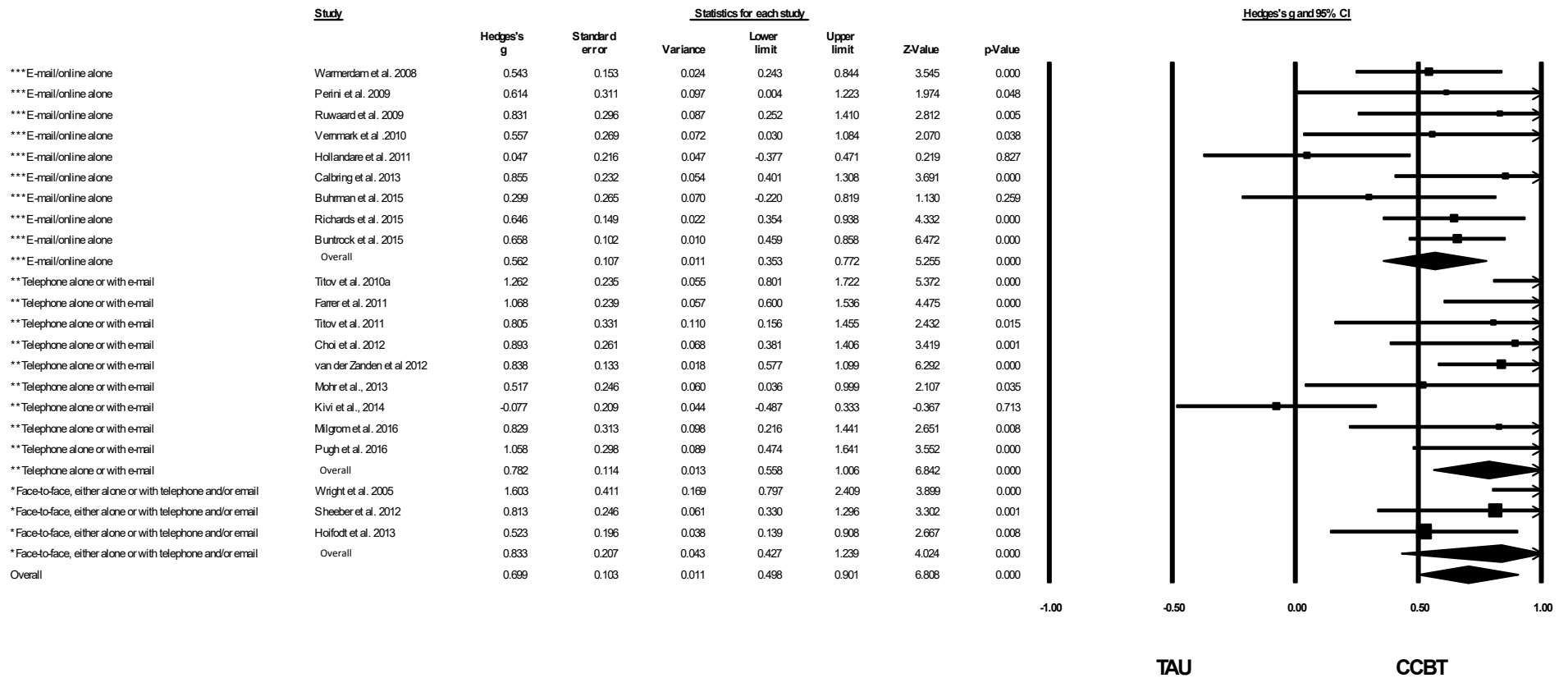
Supplementary Figure 2. Effect Sizes for CCBT versus Control Condition: Follow-up Analysis



a = Clinician-assisted CCBT; b = Technician-assisted CCBT; c = Unsupported CCBT

MG = MoodGym; BB = Beating the Blues

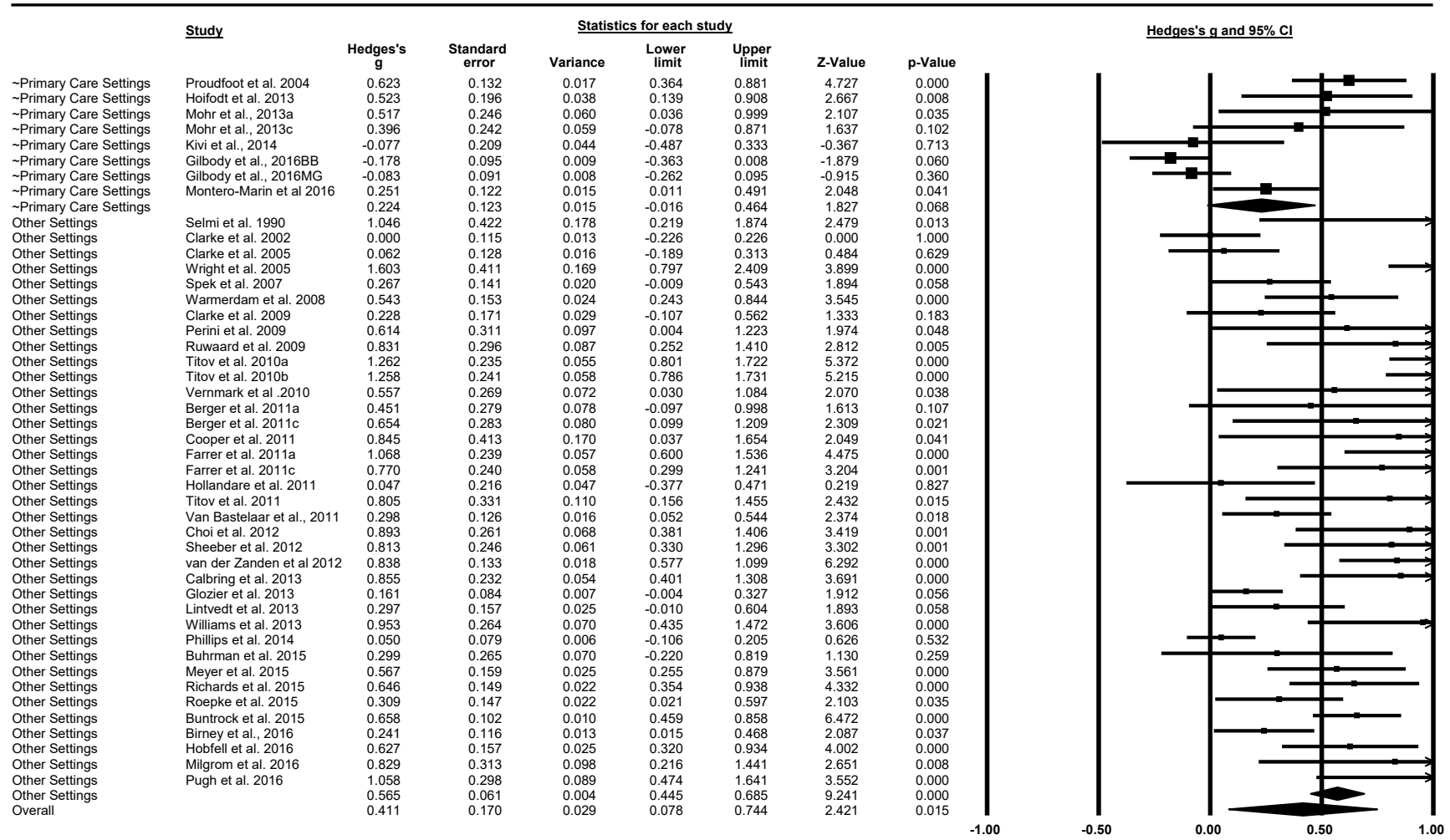
### Supplementary Figure 3. Effect Sizes for CCBT versus Control Condition: Type of Clinician Support



a = Clinician-assisted CCBT; b = Technician-assisted CCBT; c = Unsupported CCBT

MG = MoodGym; BB = Beating the Blues

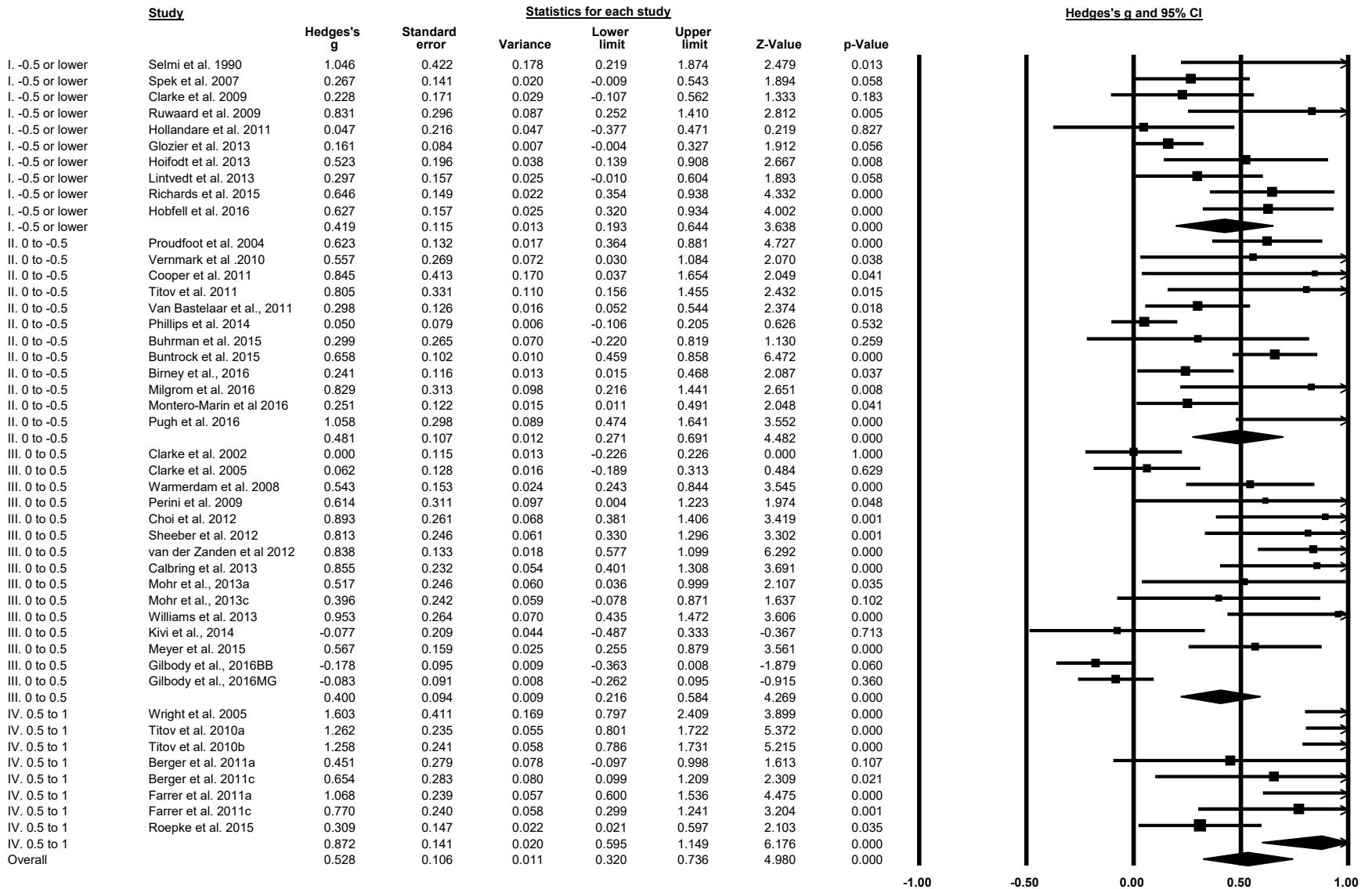
## Supplementary Figure 4. Post-treatment Effect Sizes for CCBT versus Control Condition: Primary Care Compared to Other Settings



a = Clinician-assisted CCBT; b = Technician-assisted CCBT; c = Unsupported CCBT

MG = MoodGym; BB = Beating the Blues

# Supplementary Figure 5. Post-treatment Effect Sizes for CCBT versus Control Condition: Influence of Baseline Severity of Depression



a = Clinician-assisted CCBT; b = Technician-assisted CCBT; c = Unsupported CCBT

MG = MoodGym; BB = Beating the Blues

Supplementary Table 1. CLEAR Ratings for Individual Studies

Study Reference	CLEAR-NPT Checklist Item														
	1	2	3	4	5	6	6.11	6.12	7	7.11	7.12	8	8.1	9	10
Selmi et al. 1990	3	3	0	0	0	1	3	0	1	3	0	0	na	0	0
Clarke et al. 2002	0	3	0	3	0	1	0	3	1	0	3	1	1	0	0
Proudfoot et al. 2004	0	3	0	3	1	1	0	0	1	0	0	1	1	0	0
Clarke et al. 2005	0	3	0	3	0	1	0	1	1	0	1	1	1	0	0
Warmerdam et al. 2005	0	3	0	0	0	1	3	1	1	3	1	1	1	0	0
Wright et al. 2005	3	3	0	0	0	1	0	0	1	0	0	0	na	0	0
Spek et al. 2007	0	0	0	0	0	1	3	1	1	3	1	1	1	0	0
Clarke et al. 2009	0	3	0	3	0	1	0	0	1	0	0	1	1	0	0
Perini et al. 2009	0	3	0	0	0	1	1	1	1	1	1	1	1	0	0
Ruwaard et al. 2009	0	3	0	0	0	1	0	0	1	0	0	1	1	1	0
Titov et al. 2010	0	3	0	0	0	1	1	1	1	1	1	1	1	1	0
Vernmark et al. 2010	0	3	0	0	0	1	3	0	1	3	0	0	na	0	0
Berger et al. 2011	0	3	0	0	0	1	3	3	1	3	3	1	1	0	0
Cooper et al. 2011	0	0	1	3	0	1	0	0	1	0	0	1	1	0	0
Farrer et al. 2011	0	3	0	3	0	1	3	1	1	3	1	1	1	0	0
Hollandre et al. 2011	0	3	0	0	0	1	3	0	1	3	0	2	0	0	0
Titov et al. 2011	0	3	0	0	0	1	0	0	1	0	0	1	1	1	0
Van Bastelaar et al. 2011	0	3	0	0	0	1	3	1	1	3	1	1	1	1	0
Choi et al. A12012	0	0	0	0	0	1	3	0	1	3	0	1	1	1	0
Sheeber et al. 2012	0	0	0	0	0	1	3	0	1	3	0	1	1	0	0
ver der Zanden et al. 2012	0	0	0	3	0	1	3	0	1	3	0	1	1	0	0
Carlbring et al 2013	0	0	0	0	0	1	0	0	1	0	0	1	1	1	0
Glozier et al., 2013	0	0	0	na	0	1	3	3	na	3	3	1	1	0	0
Hoifodt et al. 2013	0	1	0	3	0	1	3	1	1	3	1	1	1	0	0
Lintvedt et al. 2013	0	0	0	na	0	1	3	1	na	3	1	1	1	0	0
Mohr et al. 2013	0	0	0	0	0	1	3	0	1	3	0	1	1	1	0
Williams et al. 2013	0	3	0	na	0	1	3	3	na	3	3	1	1	0	0
Kivi et al. 2014	3	0	0	0	0	1	1	0	1	1	0	1	1	0	0
Phillips et al. 2014	0	0	0	na	0	1	3	0	1	3	0	1	1	0	0
Buhrman et al. 2015	0	0	0	0	0	1	3	0	1	3	0	1	1	0	0
Meyer et al, 2015	0	0	0	na	0	1	0	0	na	0	0	1	1	0	0
Richards et al. 2015	0	0	0	0	0	1	0	1	1	0	1	1	1	1	0
Roepke et al. 2015	0	0	0	na	0	1	3	1	na	3	1	1	1	0	0
Buntrock et al. 2015	0	0	0	3	0	1	1	1	1	1	1	1	1	0	0
Gilbody et al. 2015	0	1	0	0	0	1	0	0	1	0	0	1	1	0	0
Birney et al. 2016	0	0	0	3	0	1	3	0	2	3	0	1	1	0	0
Hobfell et al. 2016	0	3	0	0	0	1	3	1	1	3	1	1	1	0	0
Milgrom et al. 2016	0	0	0	0	0	1	1	0	1	1	0	1	1	0	0
Montero-Martin et al 2016	0	0	0	3	0	1	0	0	1	0	0	1	1	0	0
Pugh et al. 2016	0	0	0	0	0	1	3	0	1	3	0	1	1	0	0

Note.

CLEAR NPT Item Number

- 1 Was the generation of allocation sequences adequate? Yes (0); No (1); Unclear (3)
- 2 Was the treatment allocation concealed? Yes (0); No (1); Unclear (3)
- 3 Were details of the intervention administered to each group made available? Yes (0); No (1); Unclear (3)
- 4 Were care providers' experience or skill in each arm appropriate? Yes (0); No (1); Unclear (3)
- 5 Was participant (i.e., patients) adherence assessed quantitatively? Yes (0); No (1); Unclear (3)
- 6 Were participants adequately blinded? Yes (0); No, because blinding is not feasible (1); No, although blinding is feasible (2); Unclear (3)
- 6.1 If participants were not adequately blinded
- 6.11 Were all other treatments and care (i.e., cointerventions) the same in each randomized group? Yes (0); No (1); Unclear (3)
- 6.12 Were withdrawals and lost to follow-up the same in each randomized group? Yes (0); No (1); Unclear (3)
- 7 Were care providers or persons caring for the participants adequately blinded? Yes (0); No, because blinding is not feasible (1); No, although blinding is feasible (2); Unclear (3)
- 7.1 If care providers were not adequately blinded
- 7.11 Were all other treatments and care (i.e., cointerventions) the same in each randomized group? Yes (0); No (1); Unclear (3)
- 7.12 Were withdrawals and lost to follow-up the same in each randomized group? Yes (0); No (1); Unclear (3)
- 8 Were outcome assessors adequately blinded to assess the primary outcomes? Yes (0); No, because blinding is not feasible (1); No, although blinding is feasible (2); Unclear (3)
- 8.1 If outcome assessors were not adequately blinded, were specific methods used to avoid ascertainment bias (systematic differences in outcome assessment)? Yes (0); No (1); Unclear (3)
- 9 Was the follow-up schedule the same in each group? Yes (0); No (1); Unclear (3)
- 10 Were the main outcomes analyzed according to the intention-to-treat principle? Yes (0); No (1); Unclear (3)

Funnel Plot of Standard Error by Hedges's g

